

Region 23 Band Division

Major Scales

# Bass Trombone

All scales should be performed at a brisk and steady tempo

Concert C



Concert D flat



Concert D



Concert E flat



Concert E



Concert F



Concert G flat



Concert G



Concert A flat



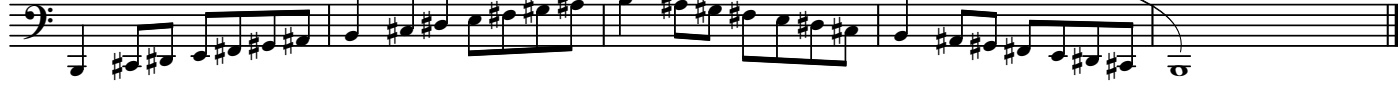
Concert A



Concert B flat



Concert B



Chromatic: written low B flat to high F  
play full range - all tongued or all slurred at student discretion

